



Total Solution Provider in Saw Device

SF-1842T2-C13

Band 3, RF-Rx SAW Filter
Revision 0 : October 2015



- Electrical Characteristics
 - Package Dimensions
 - Testing Environment
 - Frequency Characteristics
-

SAWNICS Inc.

112 Seonggeo-Street, Seonggeo-eup, Seobuk-gu, Cheonan-si, Chungcheongnam-do, South Korea
/ 31044 Tel : +82-41-550-9372 / Fax : +82-41-622-9116 / www.sawnics.com



□ Electrical Characteristics

Maximum Ratings

Parameters Description	Unit	Minimum	Typical	Maximum
Operating Temperature Range	°C	-20	-	+85
Storage Temperature Range	°C	-40	-	+85
Maximum DC Voltage	V	-	-	-
Maximum Input Power	dBm	-	-	10
Source Impedance (Unbalanced)	Ω	-	50//33nH	-
Load Impedance (Unbalanced)	Ω	-	50//12nH	-
Package type & size	C13			
Length x Width	mm ²	-	1.1 x 0.9	-
Height	mm	-	-	0.5

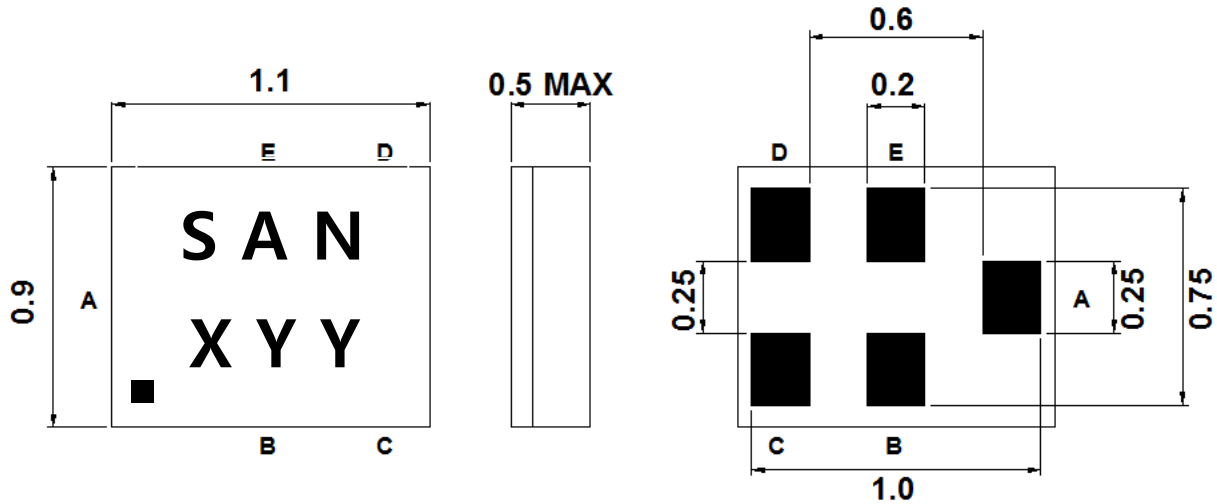


Electrical Specification

Parameters Description	Unit	Minimum	Typical	Maximum	Remarks
Center Frequency (Fo)	MHz	-	1842.5	-	
Insertion Loss within 1805.0 ~ 1880.0 MHz	dB	-	2.0	4.0	
Amplitude Ripple within 1805.0 ~ 1880.0 MHz	dB _{p-p}	-	1.3	3.3	
Input VSWR within 1805.0 ~ 1880.0 MHz	-	-	1.9	2.3	
Output VSWR within 1805.0 ~ 1880.0 MHz	-	-	1.8	2.2	
Attenuation:					
D.C ~ 960.0 MHz	dB	34	37	-	
1558.0 ~ 1608.0 MHz	dB	35	41	-	
1710.0 ~ 1785.0 MHz	dB	34	38	-	
1920.0 ~ 2400.0 MHz	dB	25	35	-	
2400.0 ~ 2500.0 MHz	dB	33	44	-	
2500.0 ~ 3610.0 MHz	dB	25	36	-	
3610.0 ~ 3760.0 MHz	dB	25	36	-	
3760.0 ~ 5415.0 MHz	dB	20	29	-	
5415.0 ~ 5640.0 MHz	dB	20	29	-	
5640.0 ~ 7220.0 MHz	dB	18	24	-	
7220.0 ~ 7520.0 MHz	dB	16	24	-	
7520.0 ~ 8000.0 MHz	dB	14	22	-	

Notes : (1) With Matching Network .

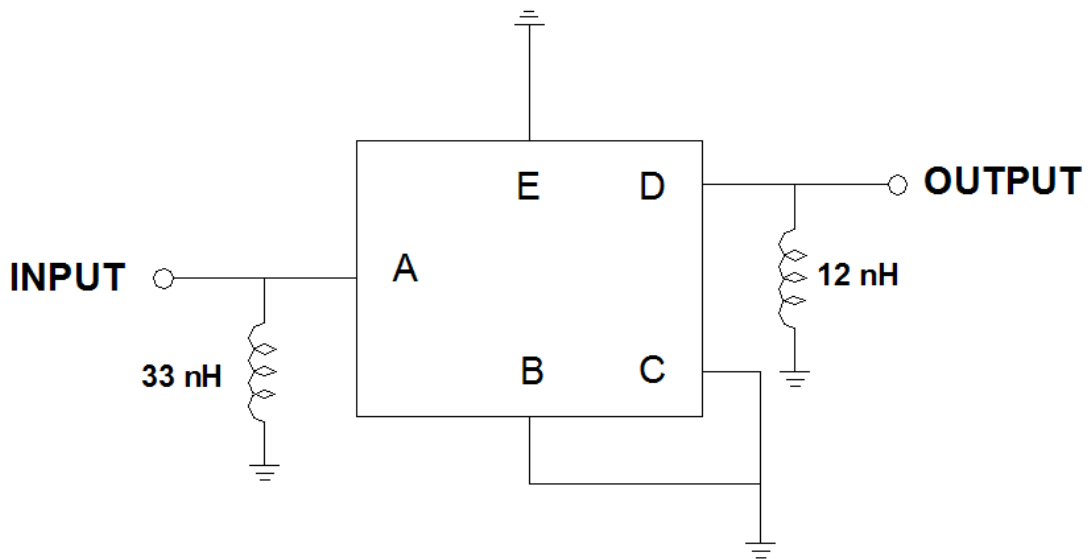
Package Dimensions



Marking Descriptions	
S	SAWNICS
AN	Series Number
X	Date Code(Year+Month)
YY	Lot No

Pin Description	
B,C,E	Ground
A	Input
D	Output

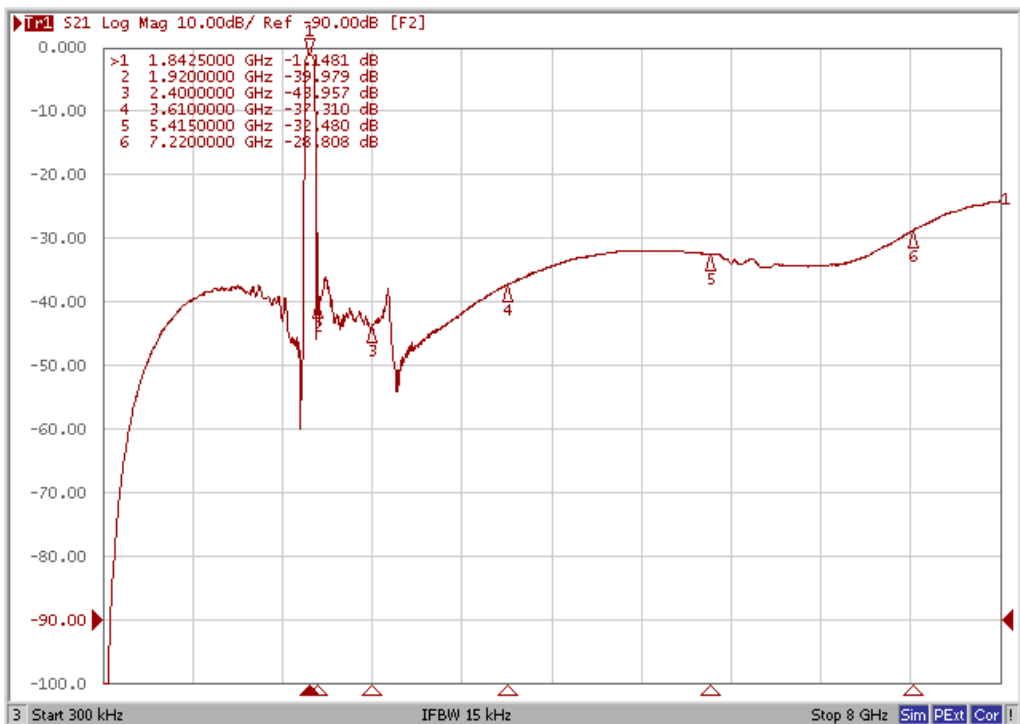
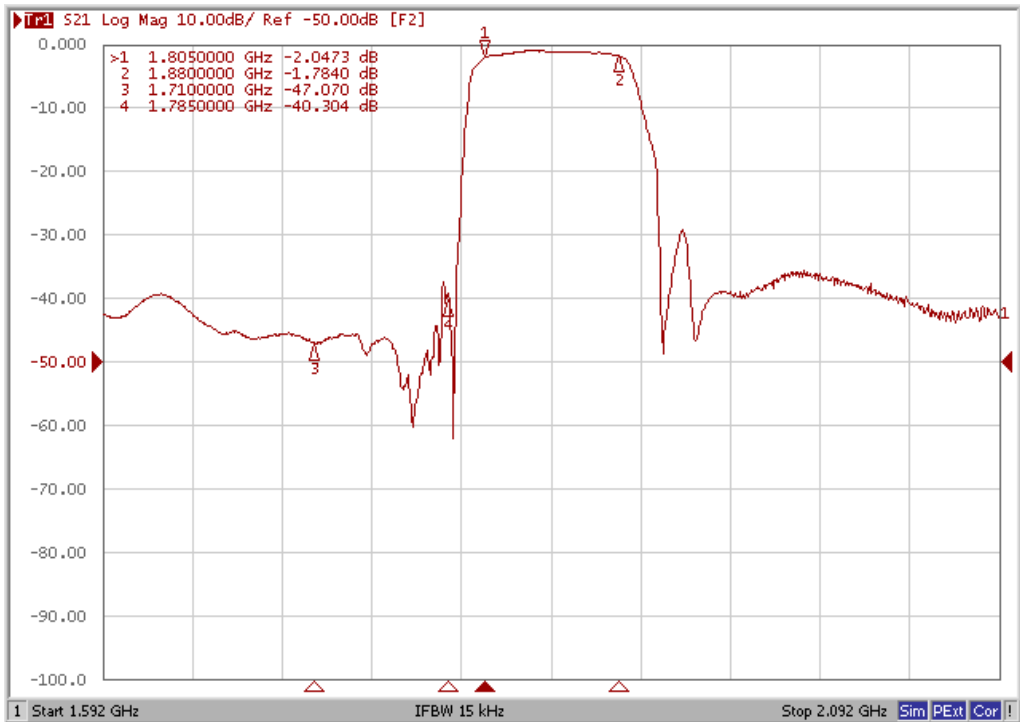
Testing Environment



Source & Load Impedance: 50 Ω

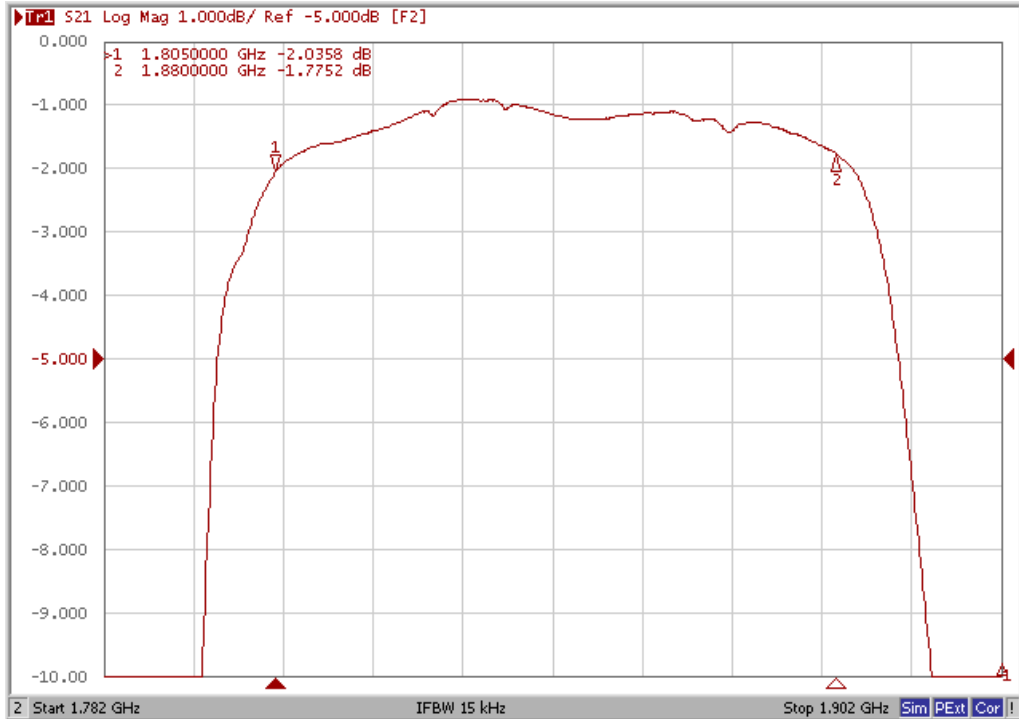
Frequency Characteristics

Frequency Response



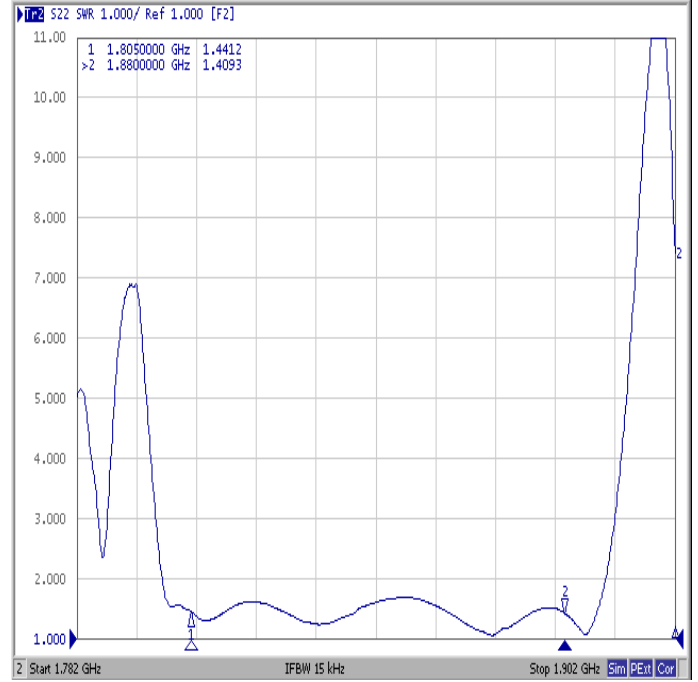
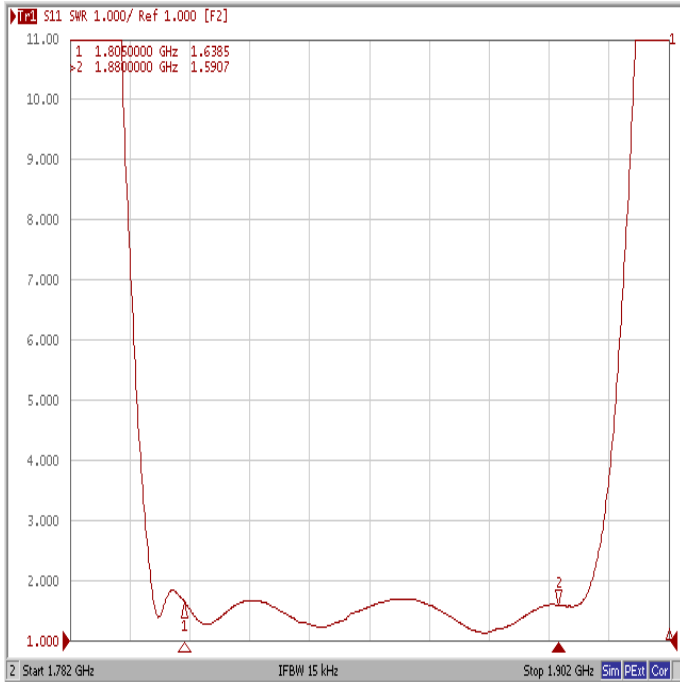


Ripple





VSWR



Smith Chart

